

Stay Safe  
Stay Saniplast

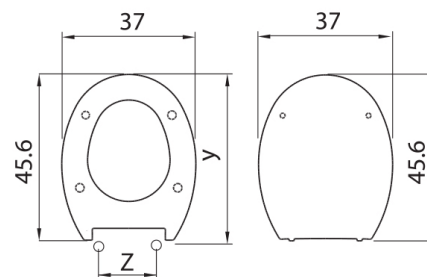
4S-Program





## AP ANTIBATTERICO

Cod. 2FSE209902AB



Y=da 41,5 a 47,5  
Z= da 9,5 a 21,5



## H481

Cerniere Slow Close, regolabili ed estraibili in Nylon con coperchio in metallo

*Slow Close, adjustable and quick release Nylon hinges with metal cover*



Kg. 2,050



Kg. 2,200



m<sup>3</sup> 0,0120



5 pcs  
Kg. 11,800



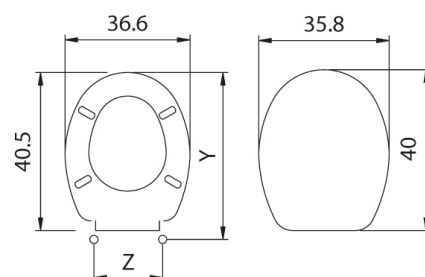
m<sup>3</sup> 0,070





## ANTIBATTERICO

Cod. 2FSE028402



Y=da 43,6 a 45,3

Z= da 12,8 a 18,4



## H011

Cerniere regolabili in Nylon  
Adjustable Nylon hinges



Kg. 1,020



Kg. 1,120



m<sup>3</sup> 0,0090



5 pcs  
Kg. 6,035



m<sup>3</sup> 0,056





Portascopino antibatterico in termoplastico  
*Antibacterial toilet brush holder in thermoplastic*



## COBRA ANTIBATTERICO

Cod. 1FPO216002AB

Misure: 15 x 15 x 36 cm

Size: 15 x 15 x 36 cm



MADE IN ITALY



## SENSING

### Dosatore con sensore

### Sensor dispenser

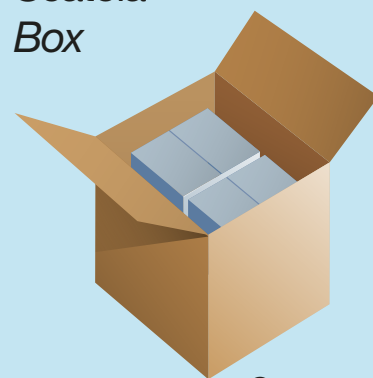
Cod. 4FCH541002

Dosatore a muro con erogatore per soluzioni disinfettanti e sapone liquido  
Sistema "No-Touch", funziona con sensore  
Richiede 4 batterie AA (non incluse)  
Capacità serbatoio: 1200 ml  
Misure: 23,5 x 14 x 11,5 cm  
Materiale: ABS bianco

*Wall dispenser for disinfectant gel  
"No-Touch" system, works with sensor  
Requires 4 AA batteries (not included)  
Capacity: 1200 ml  
Size: 23,5 x 14 x 11,5 cm  
Material: white ABS*



Scatola  
Box



2 pcs



## SENSOR

### Dosatore con sensore

### Sensor dispenser

Cod. 4FCH541160

Dosatore d'appoggio con erogatore per soluzioni disinfettanti e sapone liquido  
Sistema "No-Touch", funziona a sensore  
Richiede 4 batterie AAA (non incluse)  
Capacità serbatoio: 250 ml  
Misure: 19 x 7,5 x 10,5 cm  
Materiale: ABS cromato

*Dispenser for disinfectant solutions and liquid soap*

*"No-Touch" system, works with sensor*

*Requires 4 AAA batteries (not included)*

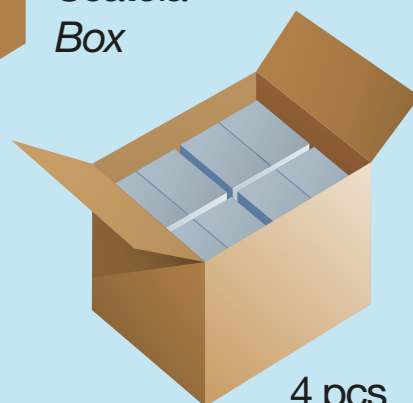
*Capacity: 250 ml*

*Size: 19 x 7,5 x 10,5 cm*

*Material: Chromed ABS*



Scatola  
Box



4 pcs



**PIANTANA per Sensing** (Cod. 4FCH541002)

**STAND for Sensing**

Cod. 4FES200054

Piantana per dosatore Sensing con igienico sistema salvagoccia Nero

Misure: 28x30x130 cm

Elementi di fissaggio inclusi

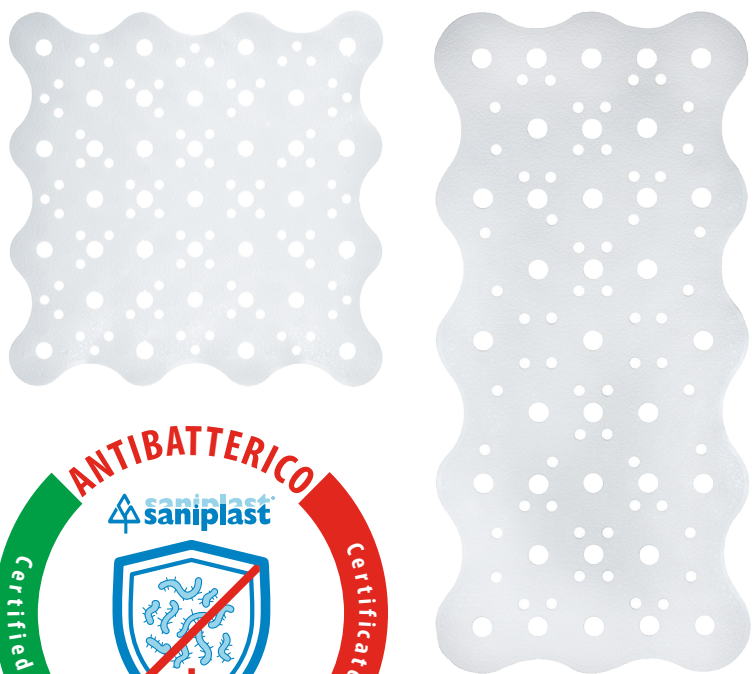
*Stand for Sensing dispenser with hygienic drip tray system Black*

*Size: 28x30x130 cm*

*Fixing elements included*



1 pcs



## Tappeto doccia ANTIBATTERICO ANTIBACTERIAL shower mat

Cod. 4FPA274002AB



51x51 cm

## Tappeto vasca ANTIBATTERICO ANTIBACTERIAL tub mat

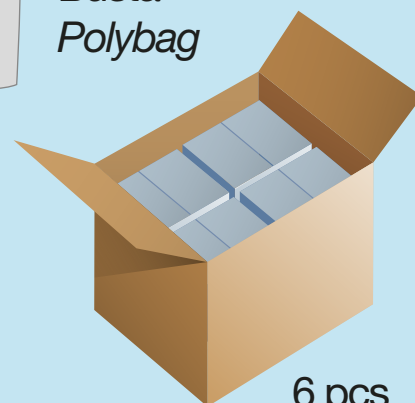
Cod. 4FPA274502AB



34x72 cm



Busta  
Polybag



6 pcs

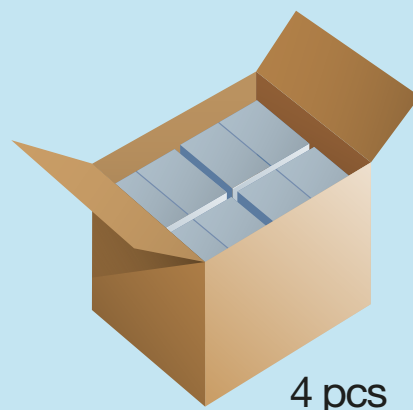




**Tanica 5 lt. GEL disinfettante**  
**Disinfectant GEL canister 5 lt.**  
Cod. 4FSC201000

Gel igienizzante con soluzione alcolica  
oltre il 60%  
Agisce in pochi istanti, senza risciacquo  
Capacità: 5 lt.

*Sanitizing gel with over 60% alcoholic  
solution*  
*Acts instantly, without rinsing*  
*Capacity: 5 lt.*



4 pcs

# 4S-Program



Saniplast Industry S.r.l. - Via G. Falcone, 10 - 25035 OSPITALETTO (BS)  
Tel. +39 030 65 77 241 - Fax +39 030 65 74 05  
[www.saniplast.it](http://www.saniplast.it) - [info@saniplast.it](mailto:info@saniplast.it)