



CATALOGO TAPPETI  
*Mats Catalogue*







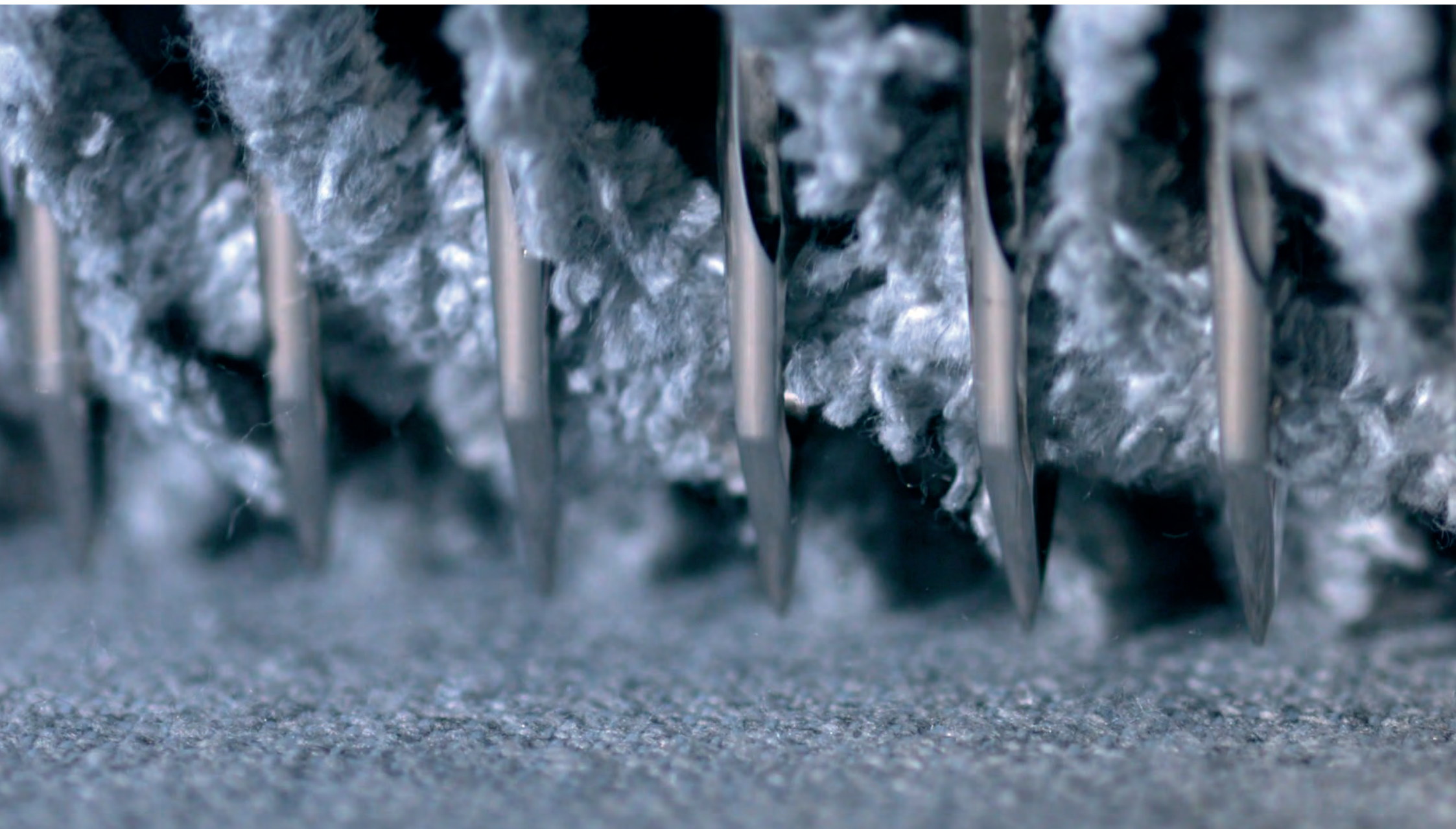






DALLA TRADIZIONE ANTICA  
AL COTONE RIGENERATO  
*FROM ANCIENT TRADITION  
TO REGENERATED COTTON*

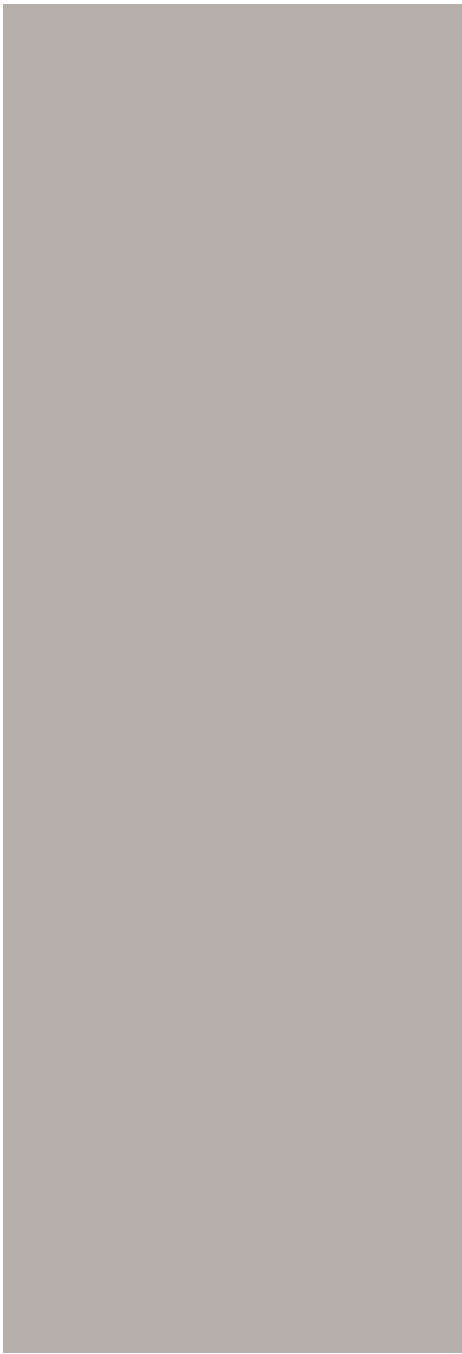








QUALITÀ E ATTENZIONE  
SONO LA NOSTRA CULTURA,  
LA NOSTRA IDENTITÀ  
*QUALITY AND ATTENTION  
ARE OUR PHILOSOPHY,  
OUR IDENTITY*



Sulle sponde del lago Maggiore, c'è una località di nome Verbania. É qui che dagli anni '70 Saniplast realizza la sua produzione tessile di tappeti, con l'ormai conosciuto marchio Saniflor by Saniplast. In una terra dove da sempre si respira l'arte della manifattura tessile, dove la creatività dell'estro italiano si intreccia con l'abilità di lavoratori esperti ed appassionati. La cura per il dettaglio, la scelta del filato, la capacità di osare e rinnovarsi continuamente nelle proposte e abbinamenti cromatici: questo è ciò che caratterizza il tappeto Saniflor, marchio ormai storico e di riferimento per l'industria tessile.

*On the shores of Lake Maggiore, there is a place called Verbania. Since the seventies Saniplast has been producing here its textile carpets, under the well-known brand Saniflor by Saniplast. This is a land where the art of textile manufacturing has always been in the air, and the creativity of Italian flair melts with the expertise and passionate workers' skills. The attention to detail, the yarn choice, the ability of continuously daring and reinventing itself in the proposals and colour combinations: this is what distinguishes the Saniflor carpet, a brand that has become a historical brand and a reference point for the textile industry.*





### **PIONIERI DEL COTONE RIGENERATO**

Da oltre cinquant'anni, Saniplast opera con grande attenzione allo sviluppo aziendale ecosostenibile. Risale all'inizio degli anni '80 la scelta di utilizzare filato di cotone rigenerato per la produzione tessile.

Da allora, i tappeti a marchio Saniflor sono tessuti utilizzando cotone rigenerato. Il cotone è la fibra tessile più usata a livello mondiale. La sua coltivazione richiede un uso abbondante di pesticidi nonché di utilizzo di acqua, dovendo irrigare campi in paesi dal clima arido e asciutto.

La coltura tradizionale del cotone risulta quindi essere ad alto impatto ambientale.

Utilizzando cotone rigenerato, anziché cotone vergine, la nostra azienda ha scelto di contribuire a ridurre l'impatto sull'ambiente per una produzione più etica.

### **PIONEERS OF REGENERATED COTTON**

*For over fifty years Saniplast has been working with great attention in order to have an eco-friendly business development. Since the early 1980s our policy was the choice of regenerated cotton yarn for the textile production. Since then, carpets branded Saniflor are woven using regenerated cotton. Worldwide cotton is the most used textile fiber.*

*Its cultivation requires an abundant use of pesticides as well as water, having to irrigate fields in countries with an arid and dry climate.*

*Traditional cotton cultivation therefore has a high environmental impact. By using regenerated cotton instead of virgin cotton, our company has chosen to help in reducing the impact on the environment for a more ethical production.*

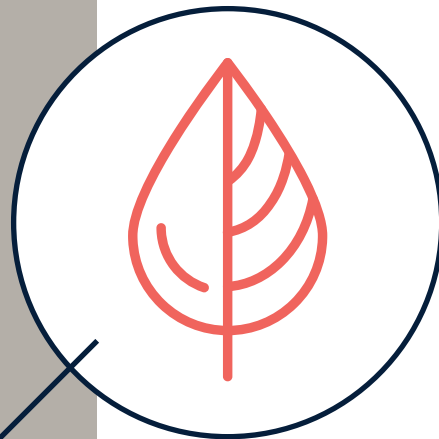


OGNI TAPPETO SANIFLOR, PRODOTTO CON 1 KG DI FILATO DI COTONE RIGENERATO, CONSENTE DI:

*MAT BRANDED SANIFLOR, PRODUCED WITH 1 KG OF REGENERATED COTTON YARN, ALLOWS TO:*

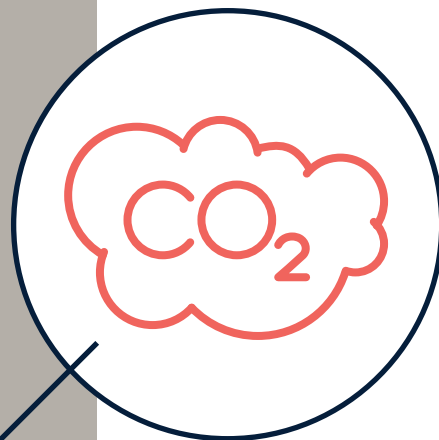
risparmiare circa 3.000 litri di acqua

*save about 3,000 liters of water*



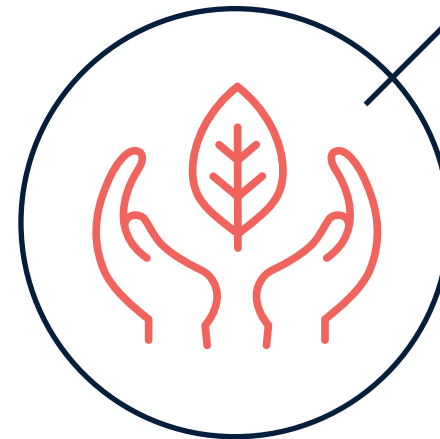
evitare l'emissione di 1,8 Kg di CO<sub>2</sub>

*avoid the emission of 1.8 Kg of CO<sub>2</sub>*



non utilizzare 11 m<sup>2</sup> di terreno che può essere utilizzato per colture alternative

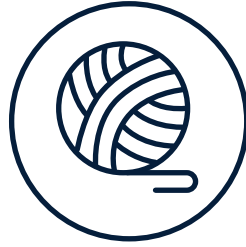
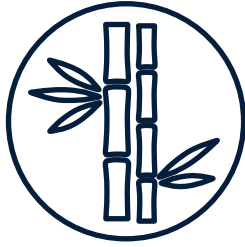
*avoid the use of 11 m<sup>2</sup> of land which can be used for alternative cultivations*



evitare l'uso di pesticidi: il 16% dei pesticidi utilizzati in tutto il mondo sono usati per le colture di cotone

*avoid the use of pesticides: 16% of pesticides worldwide is used for cotton growing*





## MATERIALI

Non solo cotone rigenerato: la nostra gamma si completa con filati di bamboo e lana. Riconoscili dal simbolo riportato sulla pagina.

## MATERIALS

*Not only regenerated cotton: our range is completed by bamboo and wool yarns. You can recognise them by the symbol on the page.*



## ANTISCIVOLO

Il nostro antiscivolo è brevettato: sicuro per tutti e resistente ad ogni lavaggio

### **NO-SLIP**

*Our anti-slip system is patented: safe for all and resistant to every wash*

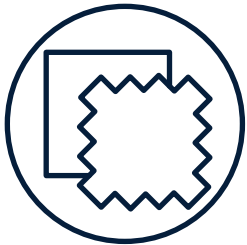


## PAVIMENTI RISCALDATI

I tappeti Saniflor sono idonei anche per il riscaldamento a pavimento

### **HEATED FLOOR**

*Saniflor mats are resistant to underfloor heating*



## LAVORAZIONI

Lavorazione jacquard, microriccio e ricciolo ciniglia: scopri i vari modelli e le nostre lavorazioni uniche

### **WORKS**

*Jacquard, micro-loop and chenille loop processing: discover the various models and our unique processes*



## LAVAGGIO IN LAVATRICE

Lavaggio a mano e in lavatrice a 30° per garantire massima igiene e pulizia: colori, ricami e proprietà antiscivolo restano intatte

### **WASHING MACHINE**

*Hand and machine wash at 30 ° to ensure maximum hygiene and cleanliness: colors, embroidery and anti-slip properties remain intact*



## MADE IN ITALY

Qualità e attenzione sono la nostra cultura. I prodotti a marchio Saniflor sono Made in Italy al 100%

### **MADE IN ITALY**

*Quality and attention to details are our culture. Saniflor brand products are 100% Made in Italy*



## SUPER SOFFICI

Morbidi, soffici e vellutati

### **SUPER SOFT**

*Soft, fluffy and velvety*

L'ATTENZIONE AL DETTAGLIO,  
LA SCELTA DELLE FANTASIE  
E L'ORIGINALITÀ NELLE LAVORAZIONI  
SONO L'ESPRESSIONE DI  
UN MADE IN ITALY INTRAMONTABILE

*ATTENTION TO DETAIL,  
THE CHOICE OF FANTASIES AND  
THE ORIGINALITY OF THE WORKINGS  
ARE THE EXPRESSION OF  
A TIMELESS MADE IN ITALY*



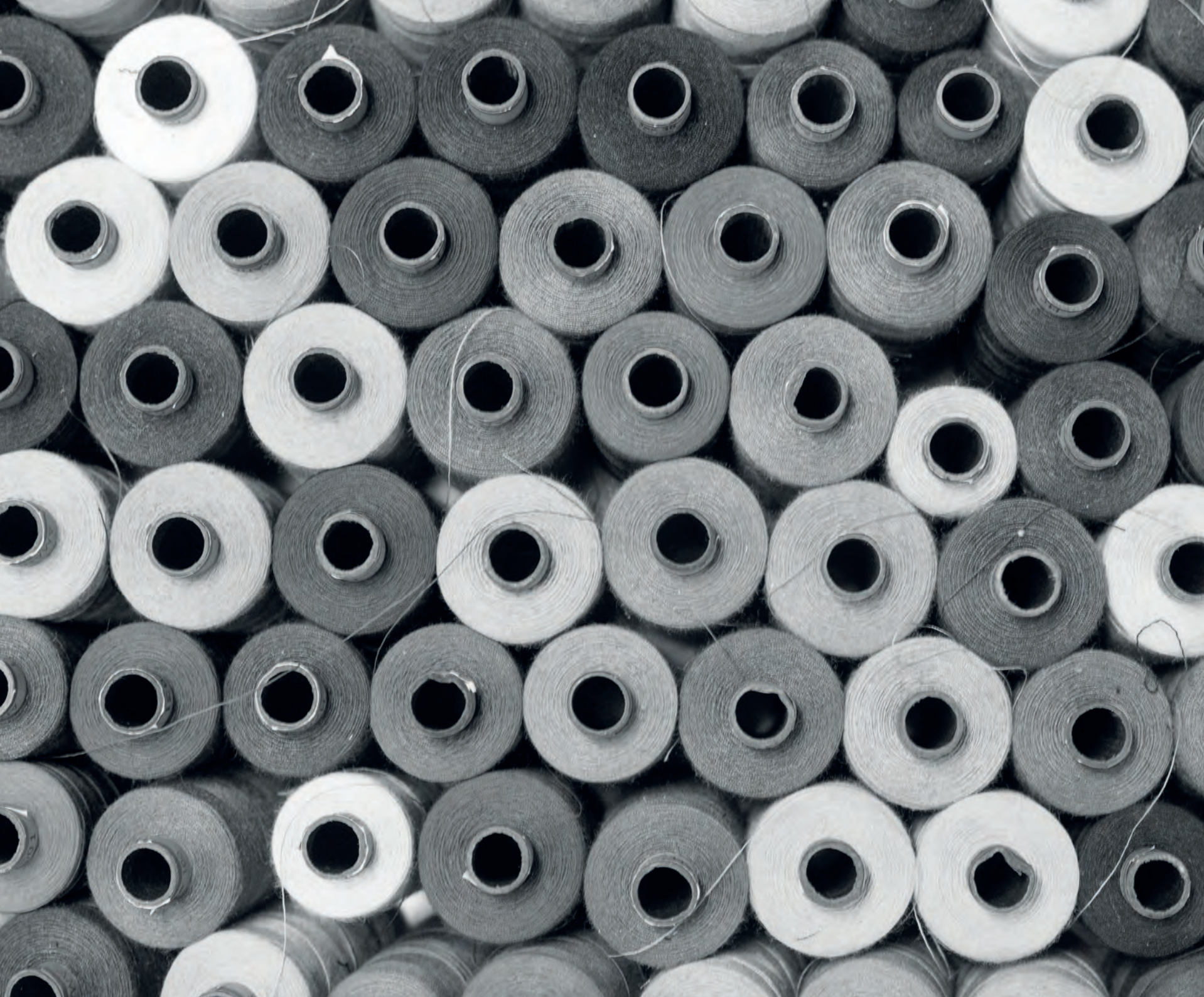












# INDICE / INDEX

## 16 GROUND

- 18 AVENUE
- 20 CHANTAL
- 24 GLAM
- 26 MAGNOLIA
- 28 MEGANE
- 32 RIM
- 34 ROMY
- 36 TECLA
- 38 TRECCIA

## 42 FREEDOM

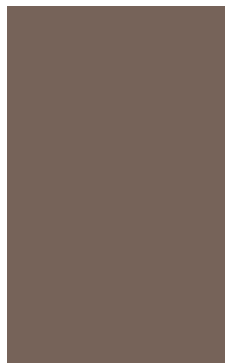
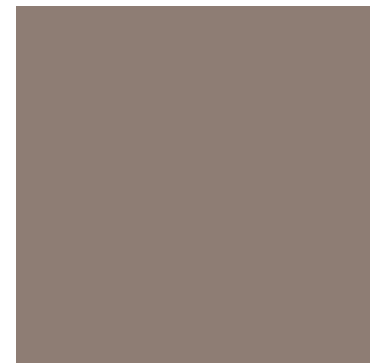
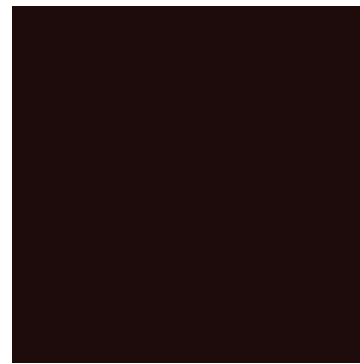
- 44 BAMBOO
- 48 CHLOÈ
- 50 ESSENZA
- 52 OLIMPIA
- 56 PLAZA
- 58 PLUME
- 62 RODI
- 64 SNACK
- 66 TRATTO

## 68 NEW MINIMAL

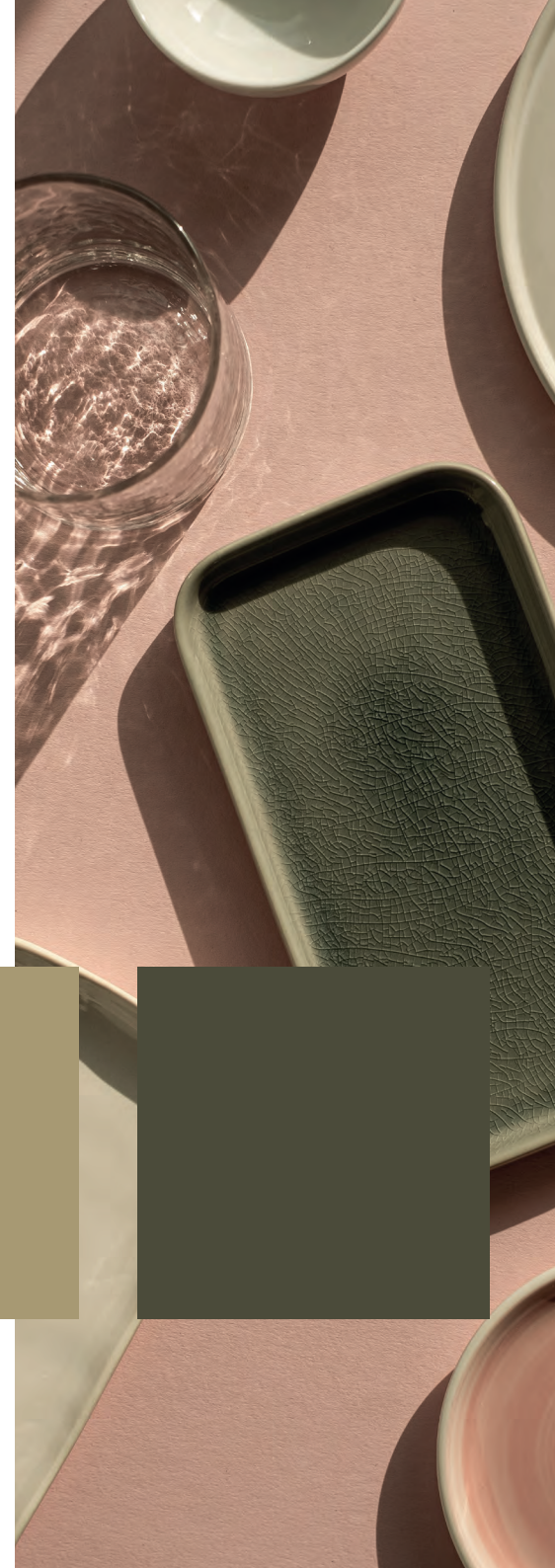
- 70 BERBERO
- 74 CORTEN
- 78 ELITE
- 80 GEOMETRIC
- 82 IKONA
- 86 JAPAN
- 88 SAMOA
- 90 SIBYLLE
- 92 WALL
- 94 WOOLSOFT



# GROUND











# AVENUE







**55x90**  
3FTAU4456--

**55x110**  
3FTAU4457--

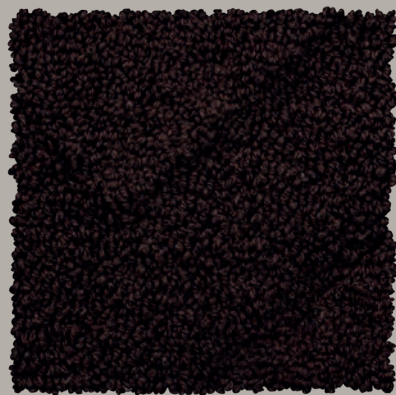
**55x140**  
3FTAU4455--

**55x190**  
3FTAU4458--

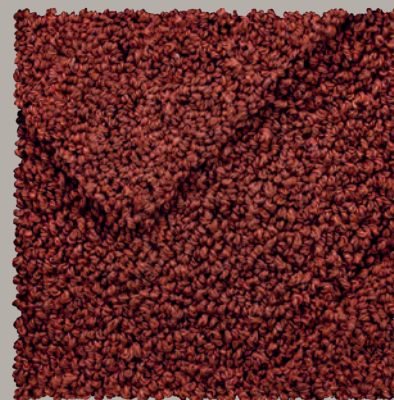
**55x240**  
3FTAU4459--



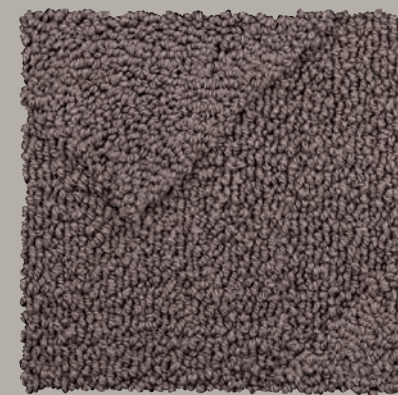
09 INTONACO



44 CIOCCOLATO



49 TERRACOTTA



53 VISONE



# CHANTAL

---

Spiccata semplicità, spazi aperti, l'odore della terra, il colore del legno, complementi dalle calde morbidity, design tattile che mantiene il contatto con la natura.

*Striking simplicity, open spaces, the smell of the earth, the colour of wood, complements with warm softness, tactile design that maintains contact with nature.*











**56x56**  
3FTAU4472--

**55x110**  
3FTAU4471--

**55x90**  
3FTAU4470--

**60x135**  
3FTAU4473--



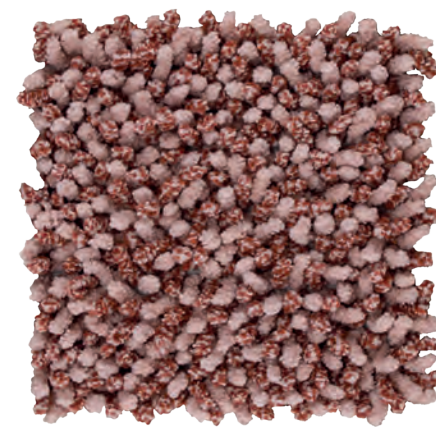
09 INTONACO



13 DARK DENIM



15 OLIVA



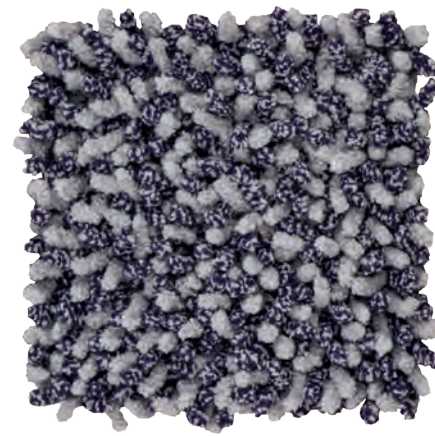
17 ROSA ÂGÉ



44 CIOCCOLATO



49 TERRACOTTA



87 PERLA



90 PIOMBO





GLAM



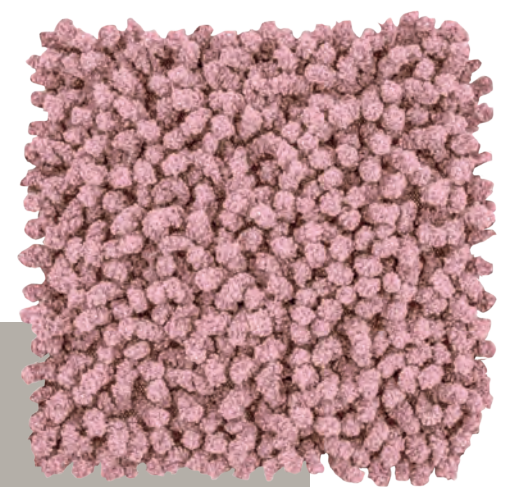
**55x100**  
3FTAU3482--



09 NATURALE



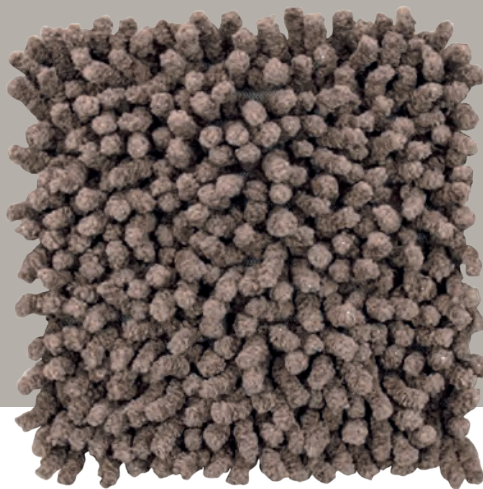
16 MOSS



17 ROSA ÂGÉ



41 FOSSILE



53 VISONE



58 PAVONE



87 PERLA







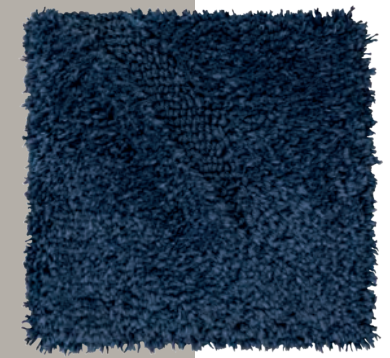


# MAGNOLIA

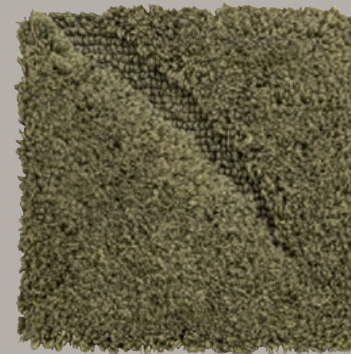
55x100  
3FTAU3603--



09 NATURALE



13 DARK DENIM



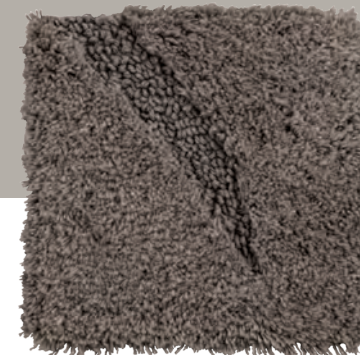
16 MOSS



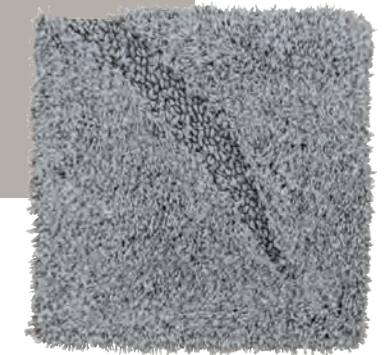
17 ROSA ÂGÉ



44 CIOCCOLATO



53 VISONE



87 PERLA





MEGANE





09 NATURALE



13 DARK DENIM



17 ROSA ÂGÉ

**60x60**  
3FTAU3451--

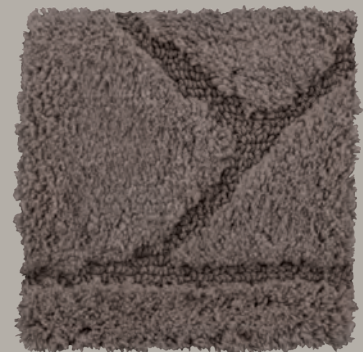
**60x100**  
3FTAU3452--

**70x140**  
3FTAU3455--

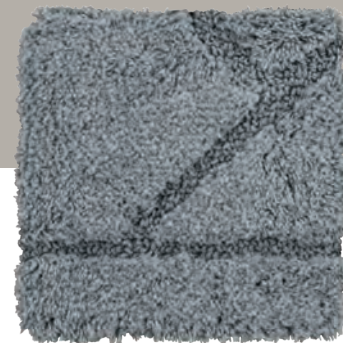
**Parure**  
**(60x100 + 2GW)**  
3FTAU3453--



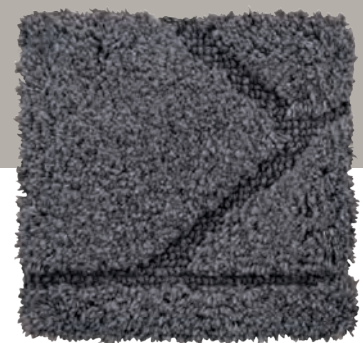
44 CIOCCOLATO



53 VISONE



87 PERLA



90 PIOMBO















# RIM

---



19 SABBIA

**55x90**

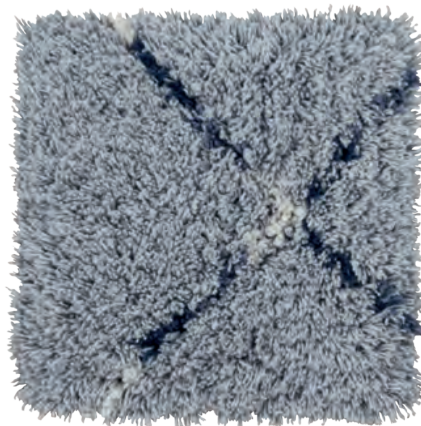
3FTAU4437--

**60x110**

3FTAU4438--



44 CIOCCOLATO



87 PERLA





# ROMY

---

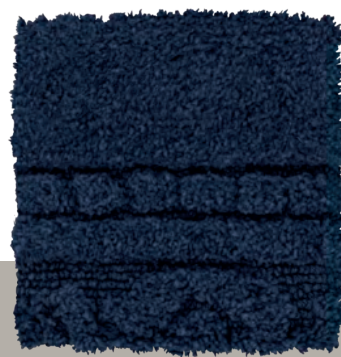




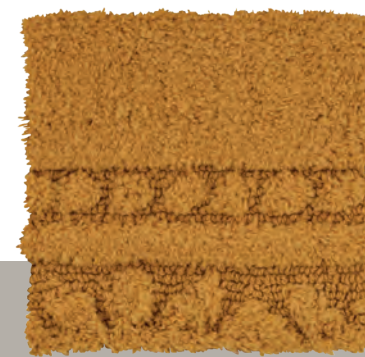
**55x90**  
3FTAU4001--



09 NATURALE



13 DARK DENIM



14 OLD GOLD

**55x110**  
3FTAU4002--



15 OLIVA



17 ROSA ÂGÉ



41 FOSSILE

**65x130**  
3FTAU4004--

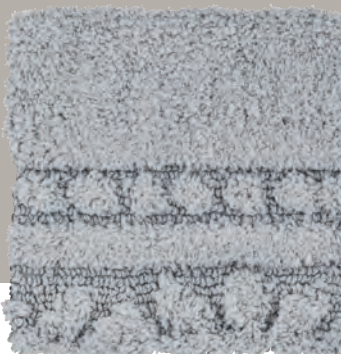
**Parure**  
**(55x90 + 2GW)**  
3FTAU4003--



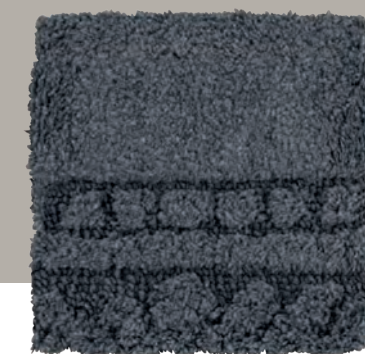
43 BIANCO



53 VISONE



87 PERLA



90 PIOMBO



TECLA







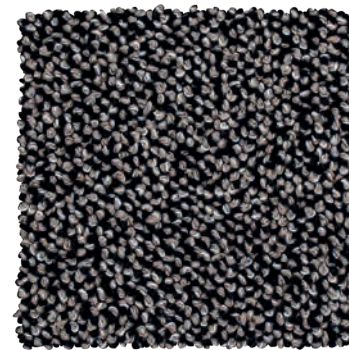
**55x90**  
3FTAU4101--

**55x110**  
3FTAU4102--

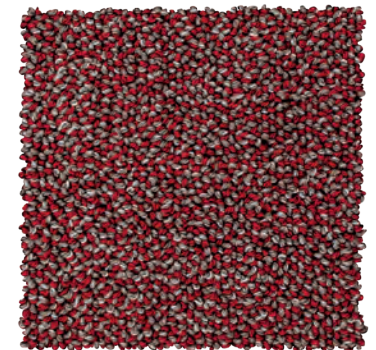
**55x140**  
3FTAU4103--

**55x190**  
3FTAU4104--

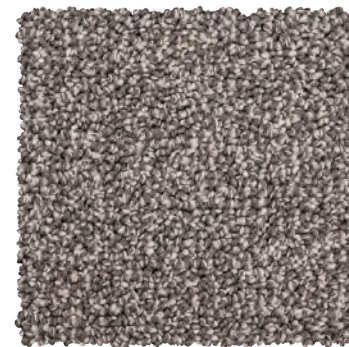
**55x240**  
3FTAU4105--



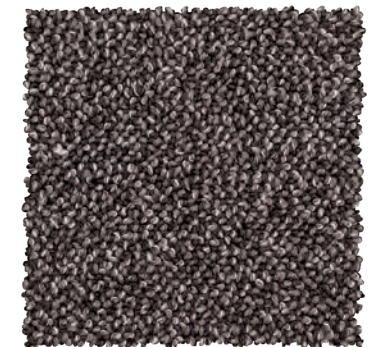
01 NERO



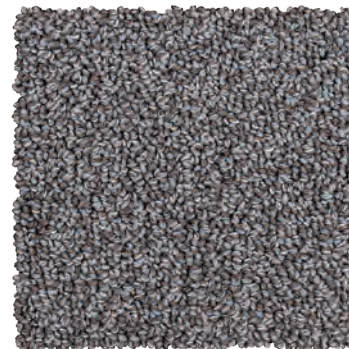
04 ROSSO



09 NATURALE



54 TORTORA



87 PERLA



90 PIOMBO



# TRECCIA

Less is More  
Immergetevi in atmosfere di eterea bellezza.

*Less is More  
Immerse yourself in atmospheres of ethereal beauty.*







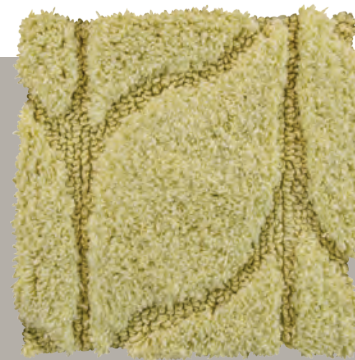




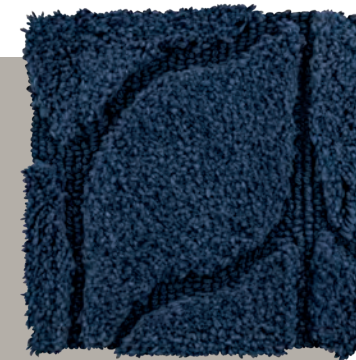




09 INTONACO



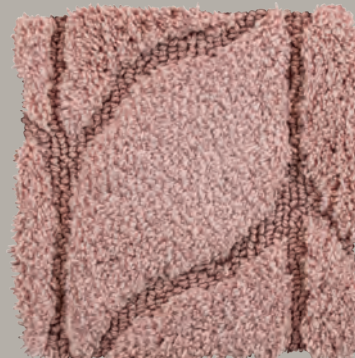
03 AVOCADO



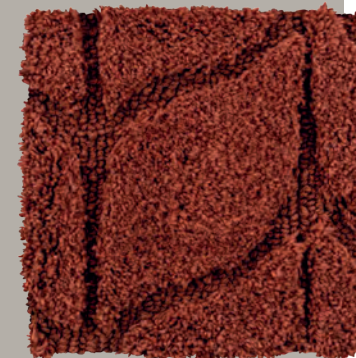
13 DARK DENIM



15 OLIVA



17 ROSA ÂGÉ



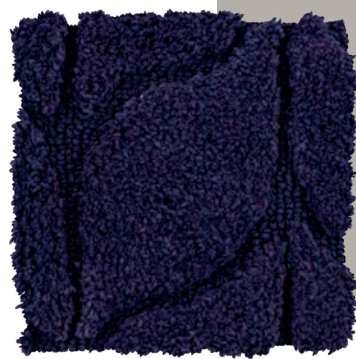
49 TERRACOTTA

**60x90**  
3FTAU4432--

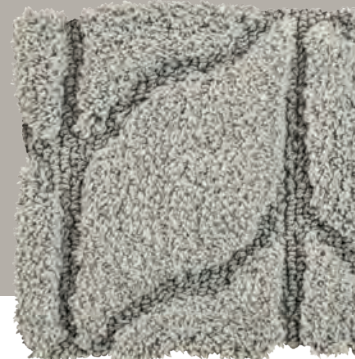
**60x110**  
3FTAU4433--

**70x135**  
3FTAU4431--

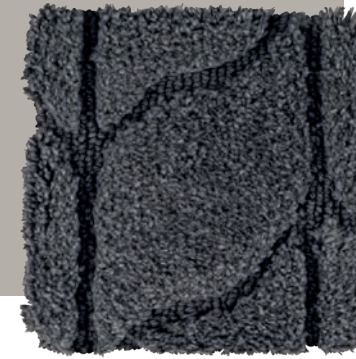
**70x170**  
3FTAU4434--



58 PAVONE



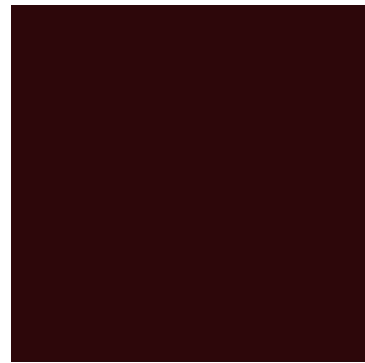
88 GHIACCIO



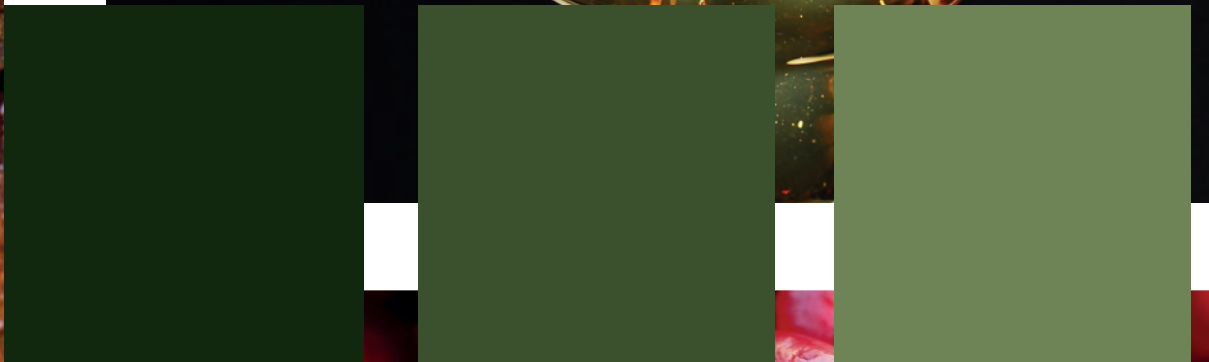
90 PIOMBO



FREEDOM













# BAMBOO

Contaminazioni, creatività e positività si esprimono attraverso le abbondanti decorazioni, i colori forti e i contrasti.

Bamboo è solo uno dei tappeti che appartengono a questa categoria: innovativo, è realizzato con fibre di bamboo e cotone rigenerato.

*Contamination, creativity and positivity expressed through abundant decoration, strong colours and contrasts.*

*Bamboo is just one of the carpets in this category: innovative, made from bamboo fibres and regenerated cotton.*









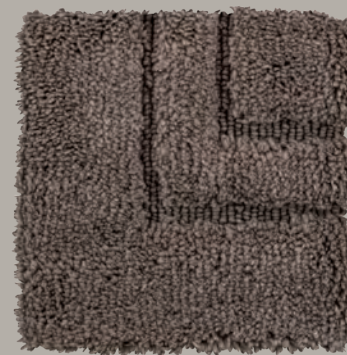
**60x110**  
3FTAU3541--

**70x140**  
3FTAU3542--

**78x160**  
3FTAU3543--



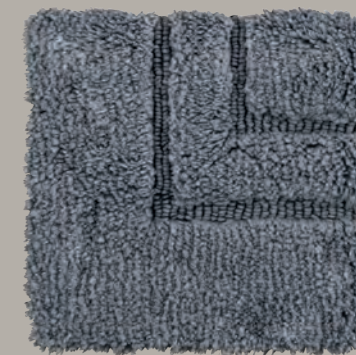
12 CASTORO



18 VISONE



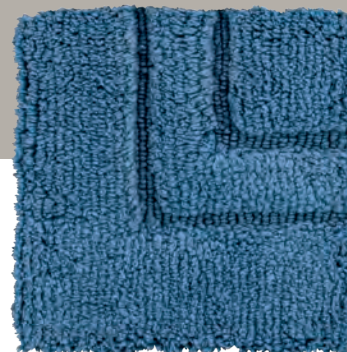
09 CHAMPAGNE



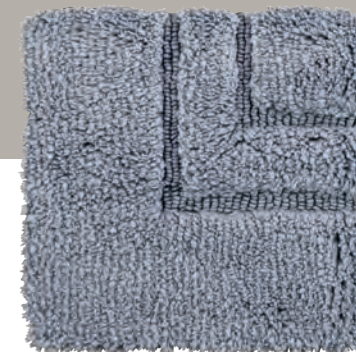
62 PIOMBO



70 SENAPE

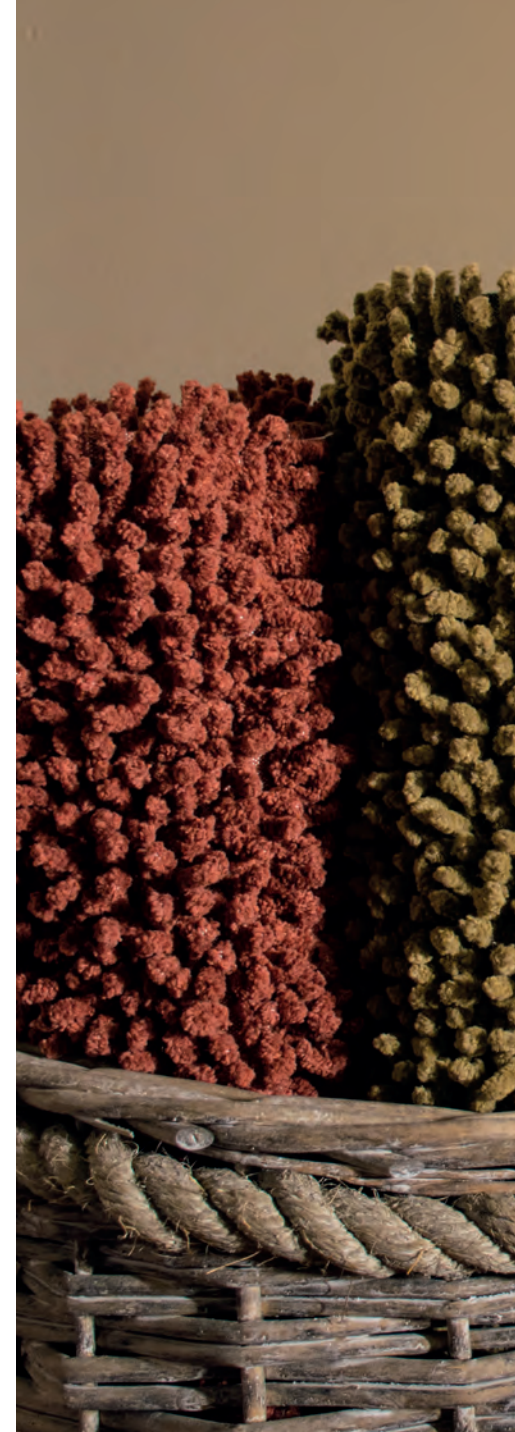


71 OTTANIO



87 PERLA







CHLOÈ



**56x56**  
3FTAU4477--

**55x90**  
3FTAU4475--

**55x110**  
3FTAU4476--

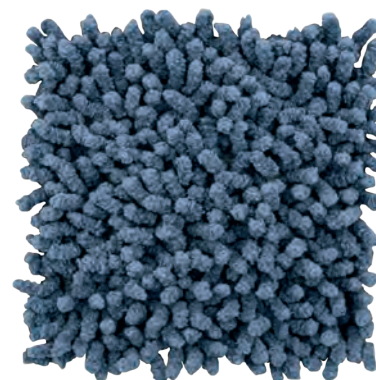
**60x135**  
3FTAU4478--



09 INTONACO



16 MOSS



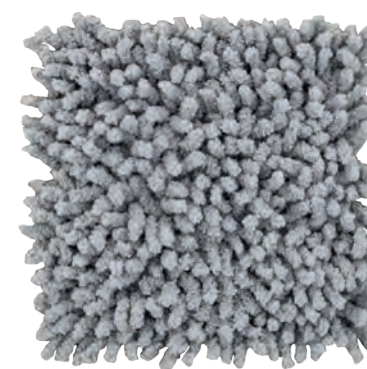
33 METALLO



41 FOSSILE



49 TERRACOTTA



87 PERLA



# ESSENZA

Voglia di libertà, di poter esprimere  
la propria personalità senza regole.

*Desire of freedom, to express  
yourself without rules.*





60x110  
3FTAU4444--

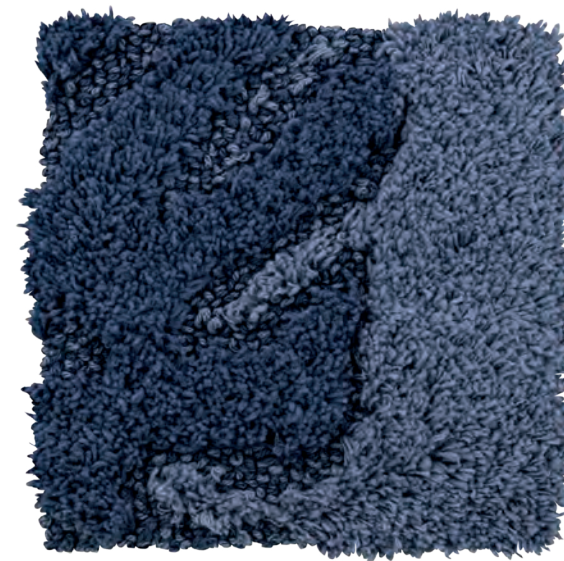
70x140  
3FTAU4443--



09 INTONACO



19 SABBIA



33 METALLO



49 TERRACOTTA



58 PAVONE



87 PERLA



# OLIMPIA

**55x90**

3FTAU4450--

**55x110**

3FTAU4451--

**55x140**

3FTAU4449--

**55x190**

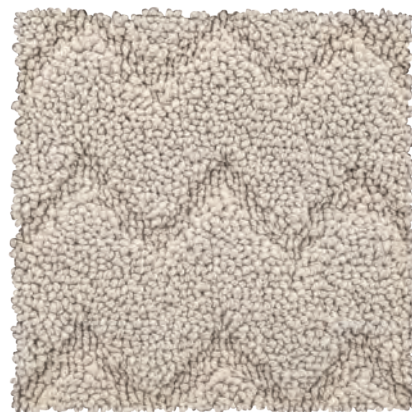
3FTAU4452--

**55x240**

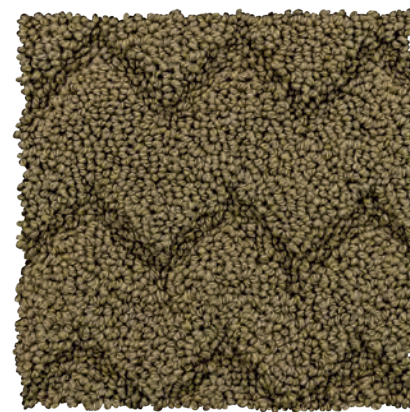
3FTAU4453--

**Su misura in lunghezza/  
Customized length**

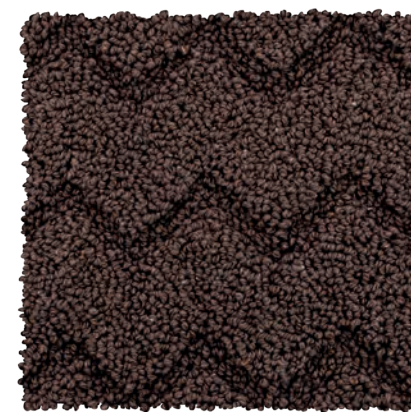
3FTAU4454--



09 INTONACO

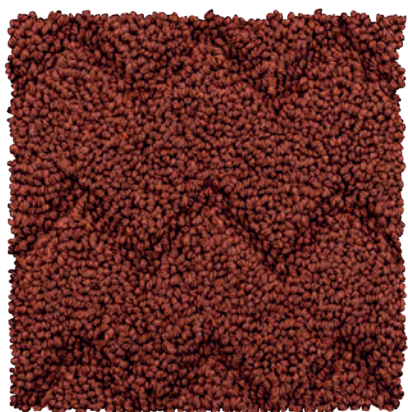


16 MOSS

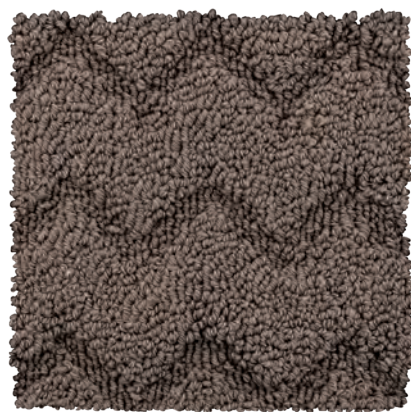


41 FOSSILE

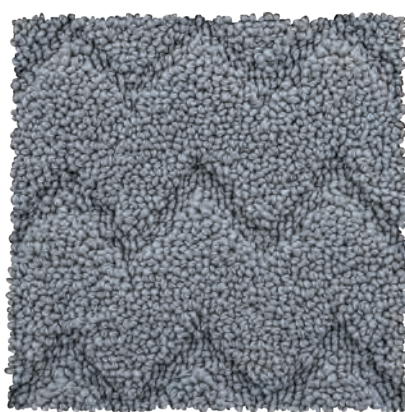




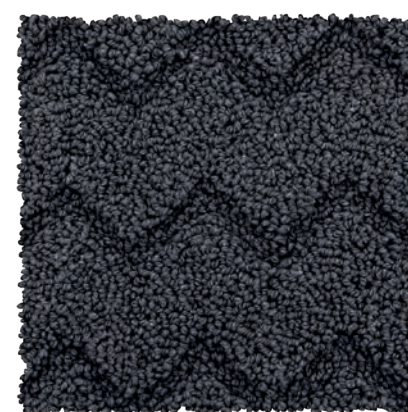
49 TERRACOTTA



53 VISONE



87 PERLA



90 PIOMBO

















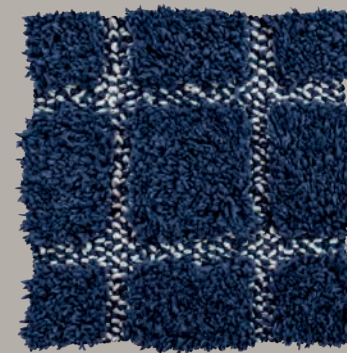
# PLAZA

**60x60**  
3FTAU3671--

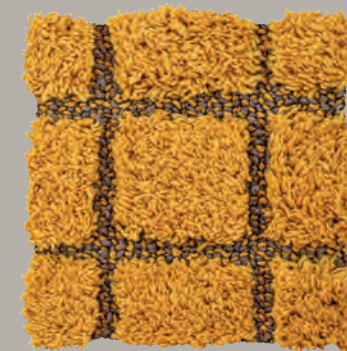
**60x90**  
3FTAU3672--

**60x110**  
3FTAU3673--

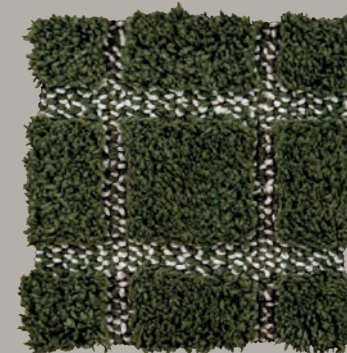
**65x130**  
3FTAU3674--



13 DARK DENIM



14 OLD GOLD



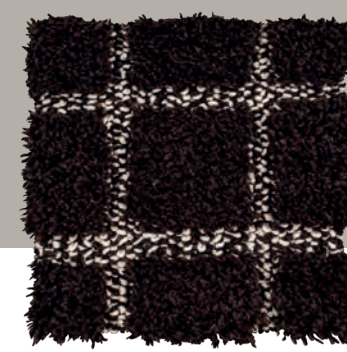
15 OLIVA



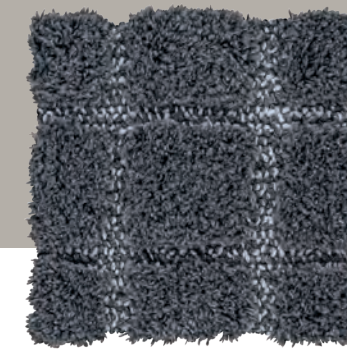
24 VISIONE



35 NATURALE



44 CIOCCOLATO



62 PIOMBO











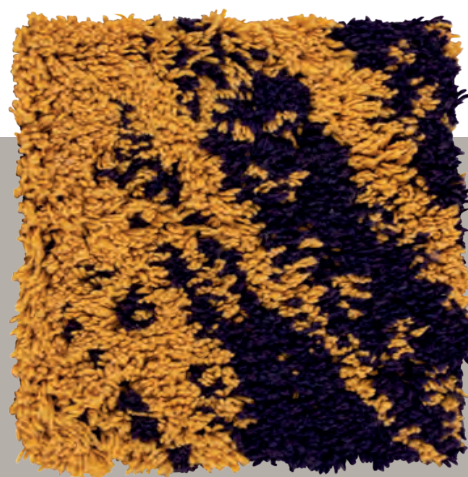




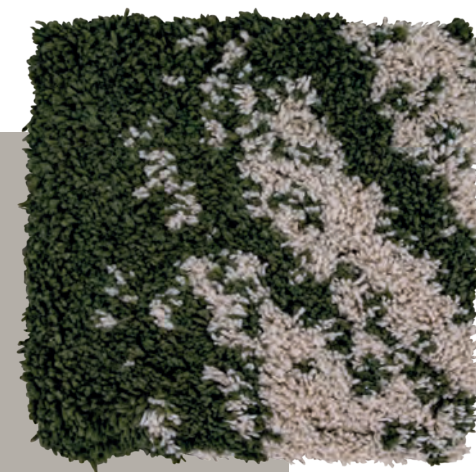
60x120  
3FTAU4429--



09 INTONACO



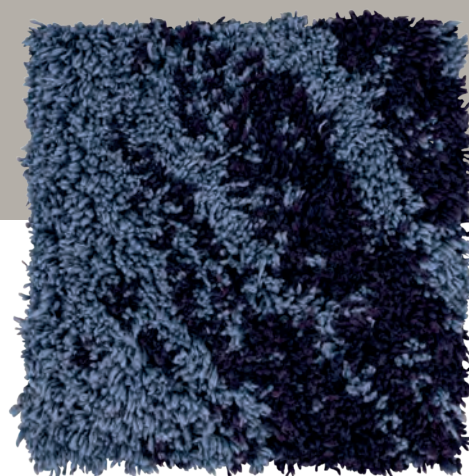
14 OLD GOLD



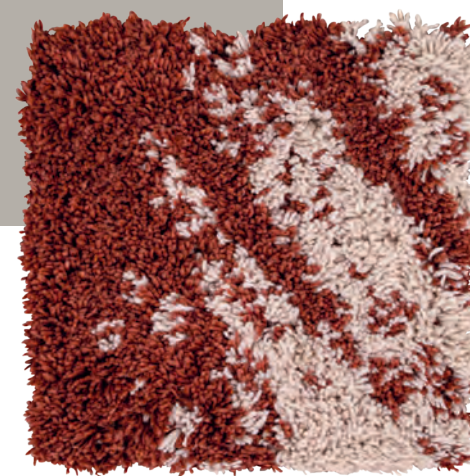
15 OLIVA



22 SALVIA



33 METALLO



49 TERRACOTTA



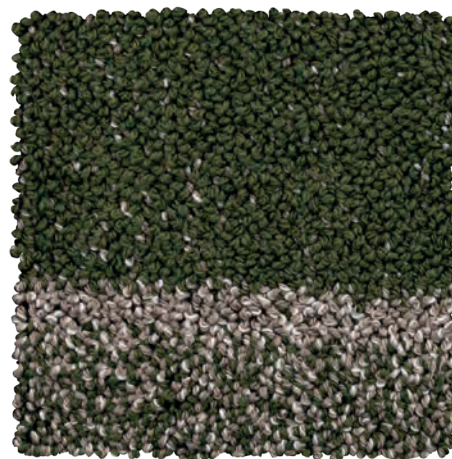


RODI

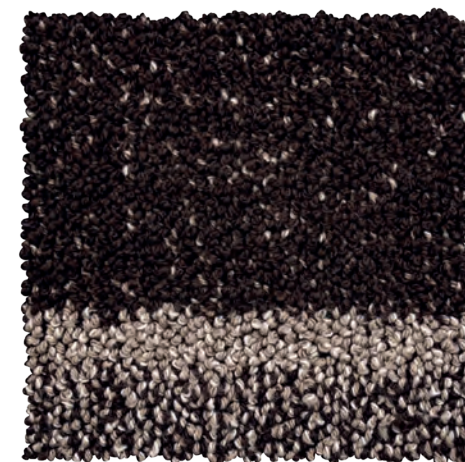




09 NATURALE



15 OLIVA



44 CIOCCOLATO

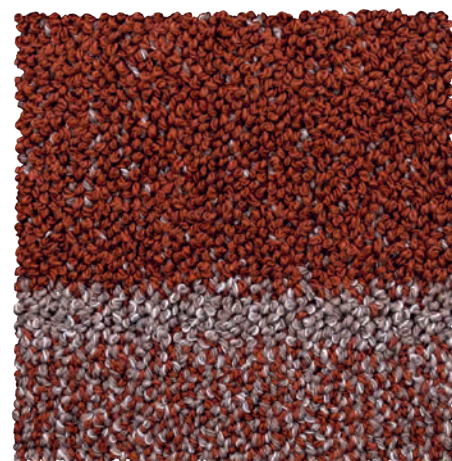
**55x90**  
3FTAU3511--

**55x110**  
3FTAU3512--

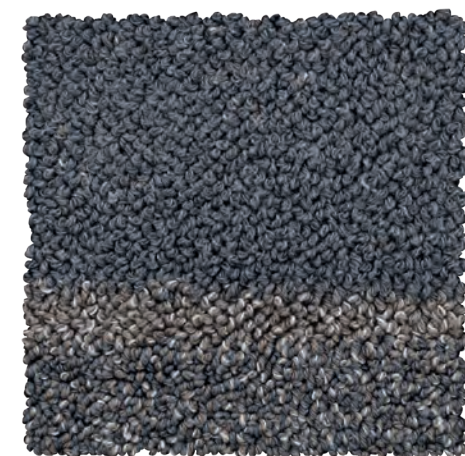
**55x140**  
3FTAU3513--

**55x190**  
3FTAU3514--

**55x240**  
3FTAU3515--



49 TERRACOTTA



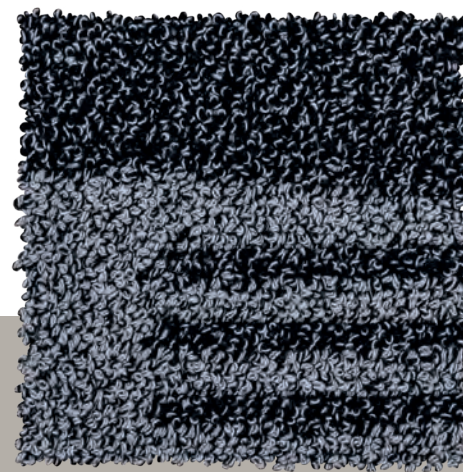
90 PIOMBO



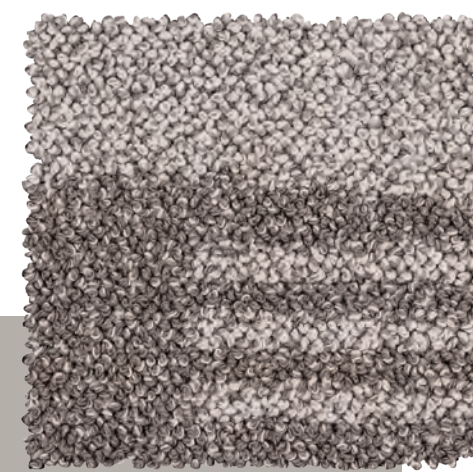




# SNACK



01 NERO



09 NATURALE

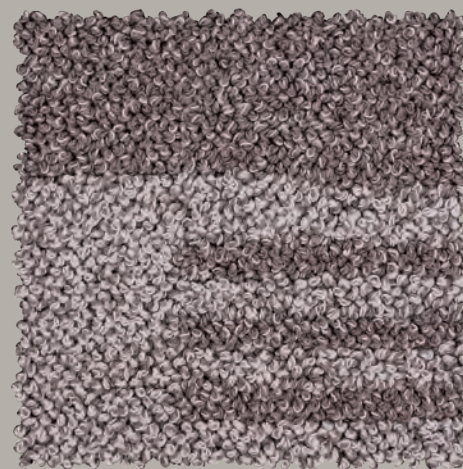
**55x90**  
3FTAU3591--

**55x110**  
3FTAU3592--

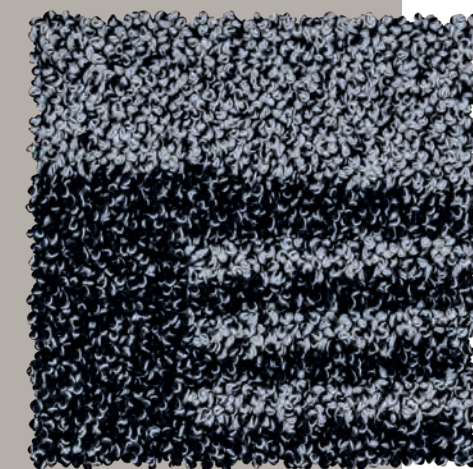
**55x140**  
3FTAU3593--

**55x190**  
3FTAU3594--

**55x240**  
3FTAU3595--



53 VISIONE



90 PIOMBO









# TRATTO

**55x90**  
3FTAU3551--

**55x120**  
3FTAU3552--



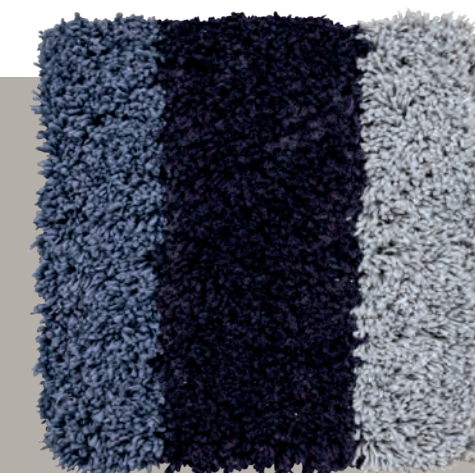
16 MOSS



17 ROSA ÂGÉ



49 TERRACOTTA



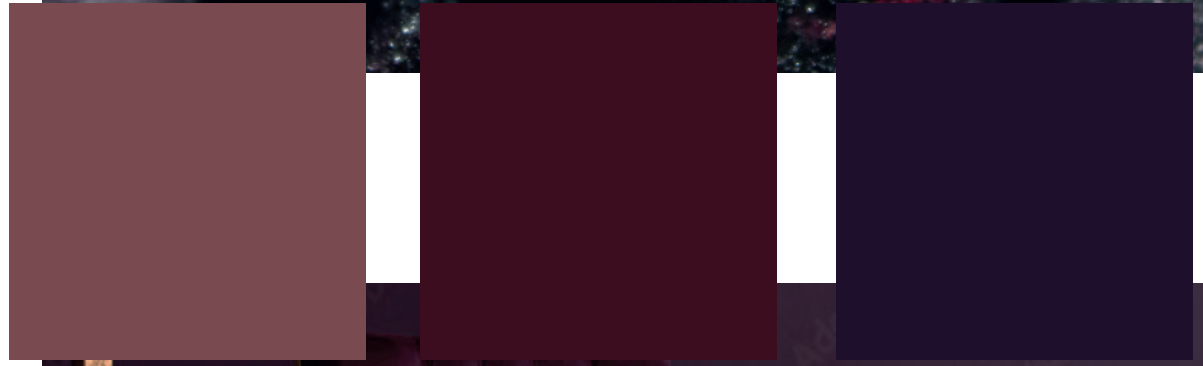
58 PAVONE



# NEW MINIMAL













# BERBERO











**60x110**  
3FTAU4425--

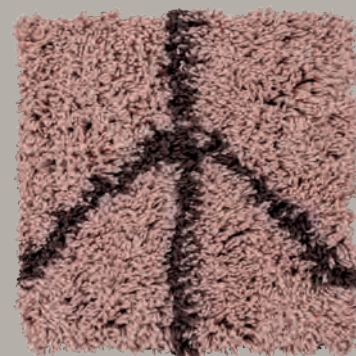
**70x140**  
3FTAU4426--



09 INTONACO



13 DARK DENIM



17 ROSA ÂGÉ



19 SABBIA



44 CIOCCOLATO



49 TERRACOTTA





## CORTEN

Minimalismo, organizzazione, simmetria, luce, immediatezza.  
Uno stile senza epoca, dove il vecchio si mischia al nuovo in una  
sinfonia di temi di grigio, accenti di blu e calde note di cioccolato.

*Minimalism, organisation, symmetry, light, immediacy.  
A style without era, where the old mixes with the new in a symphony  
of grey themes, blue accents and warm chocolate notes.*









**55x90**  
3FTAU4462--

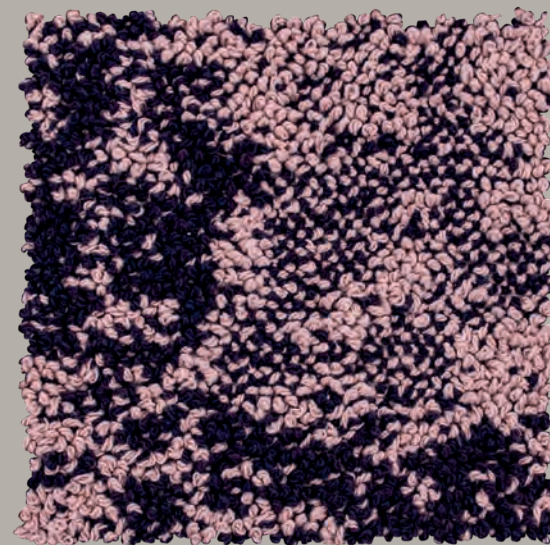
**55x110**  
3FTAU4463--

**55x140**  
3FTAU4461--

**55x190**  
3FTAU4464--

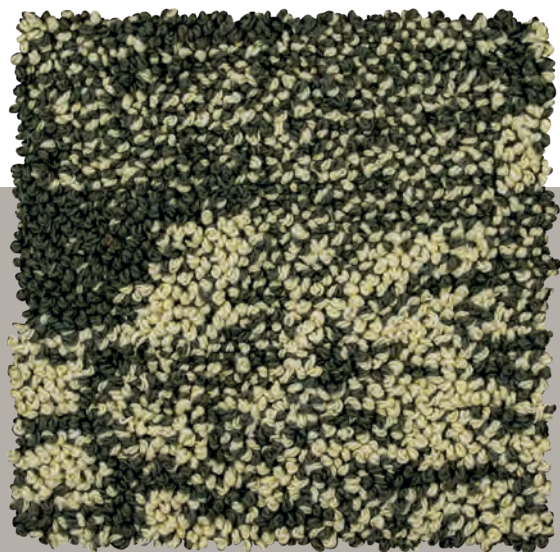
**55x240**  
3FTAU4465--

**Su misura in lunghezza/  
Customized length**  
3FTAU4466--



17 ROSA ÂGÉ

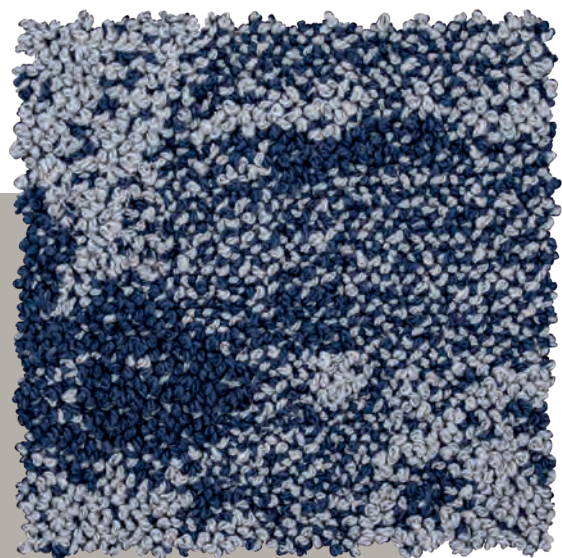




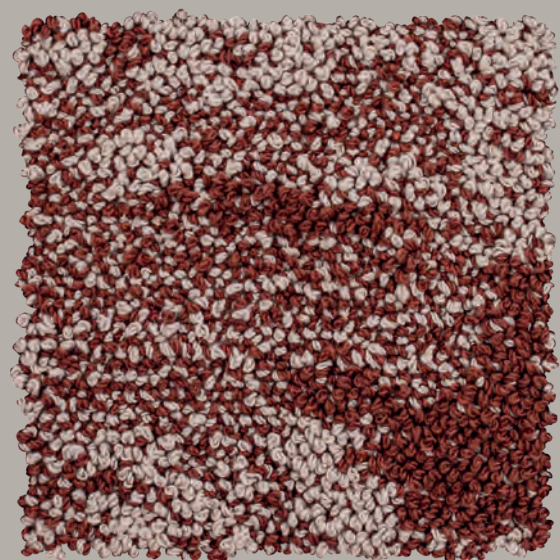
03 AVOCADO



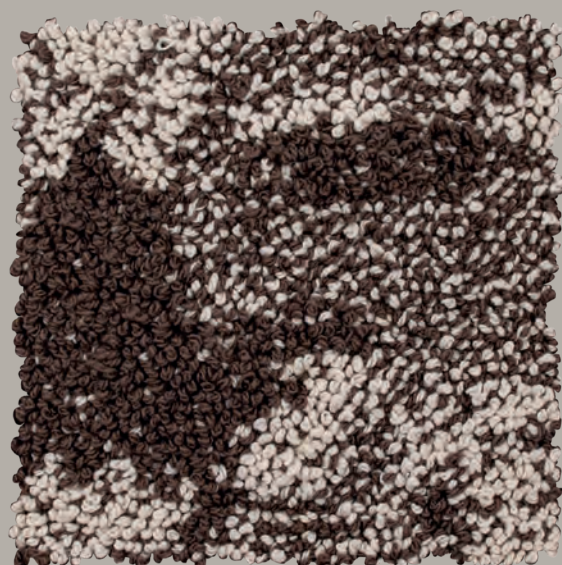
09 INTONACO



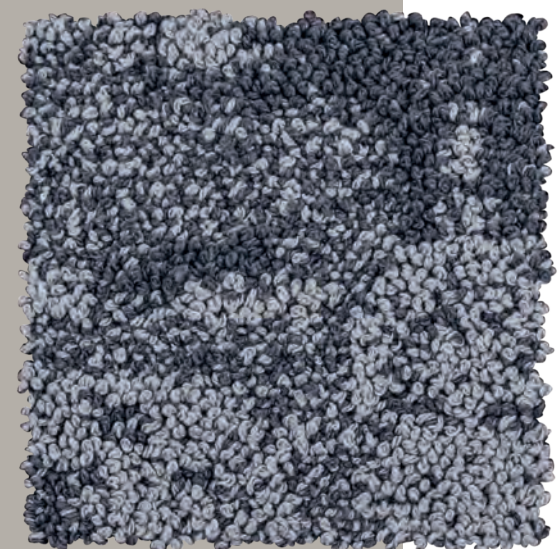
13 DARK DENIM



19 SABBIA



41 FOSSILE



90 PIOMBO









# ELITE

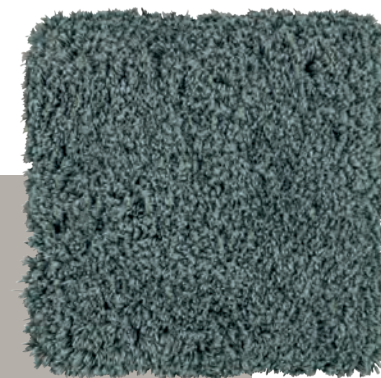
**60x90**  
3FTAU3636--

**60x110**  
3FTAU3637--

**70x140**  
3FTAU3638--

**80x160**  
3FTAU3639--

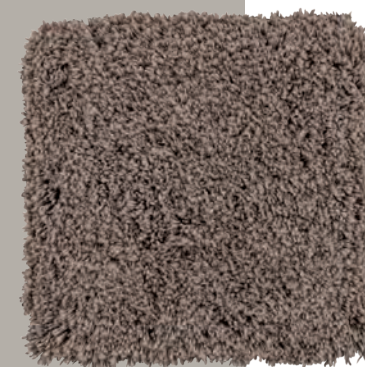
**Su misura/Customized**  
3FTAU3640--



22 SALVIA



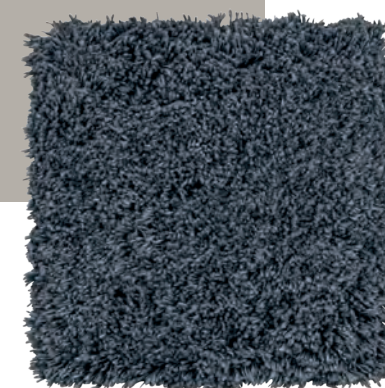
41 FOSSILE



53 VISONE



88 GHIACCIO



90 PIOMBO









# GEOMETRIC

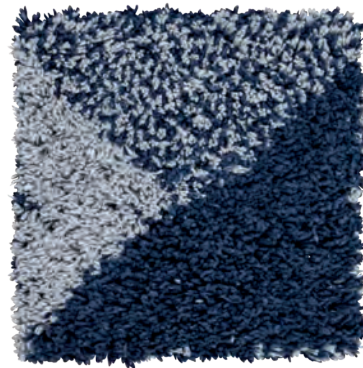
**55x100**  
3FTAU0244--



03 AVOCADO



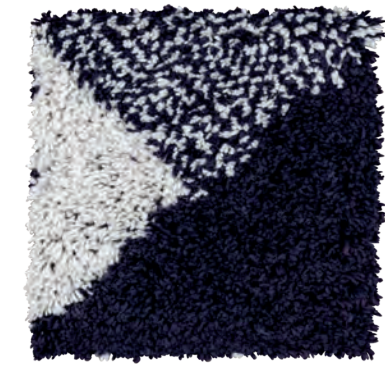
09 NATURALE



13 DARK DENIM



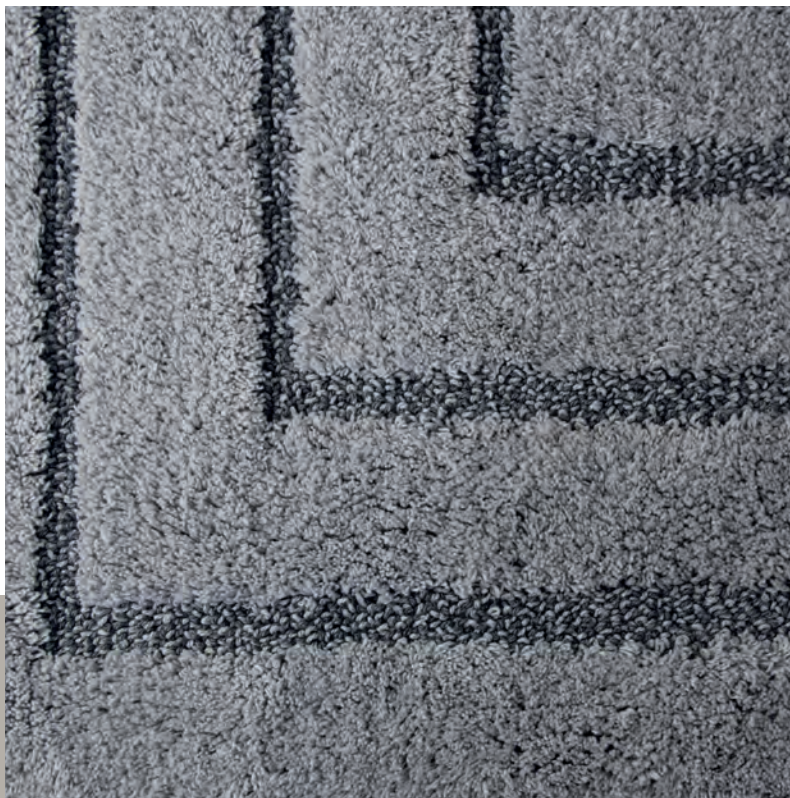
17 ROSA ÂGÉ



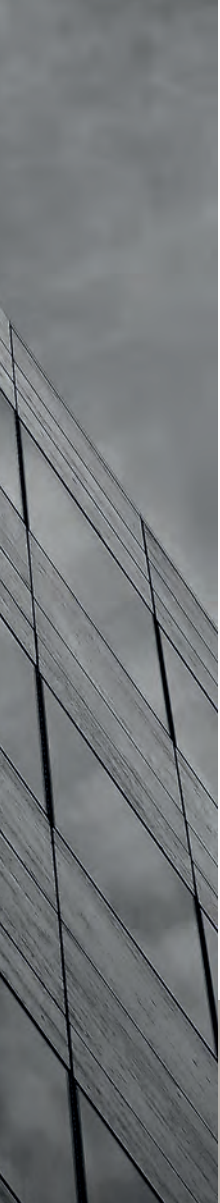
58 PAVONE



# IKONA





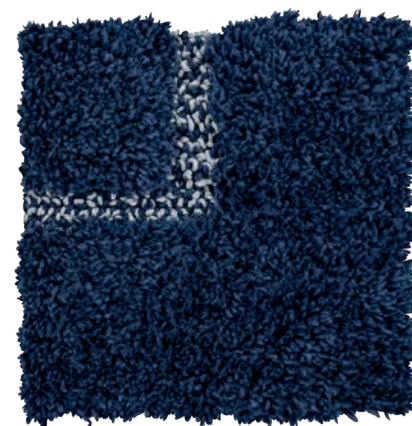


**55x90**  
3FTAU0231--

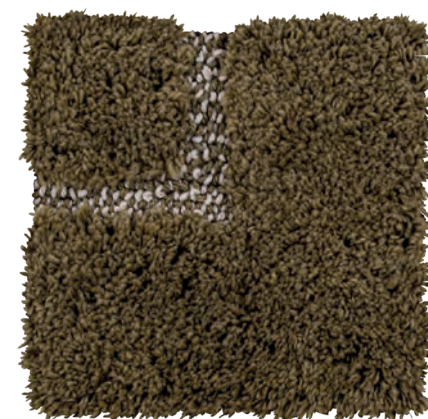
**55x120**  
3FTAU0232--



09 INTONACO



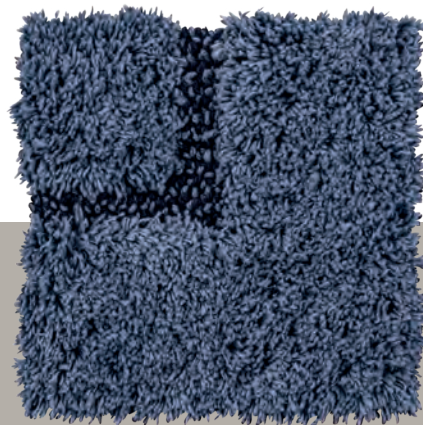
13 DARK DENIM



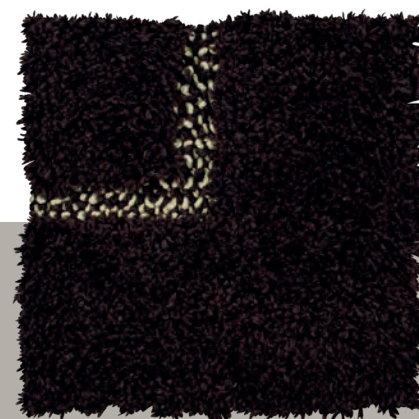
16 MOSS



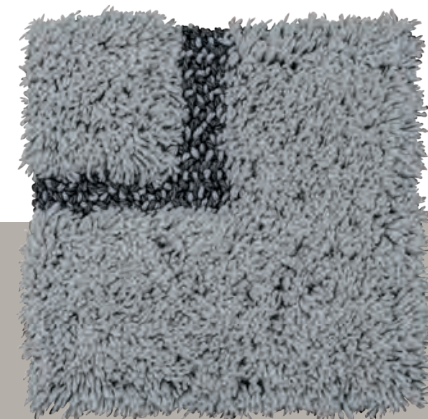
17 ROSA ÂGÉ



33 METALLO



44 CIOCCOLATO



87 PERLA











# JAPAN





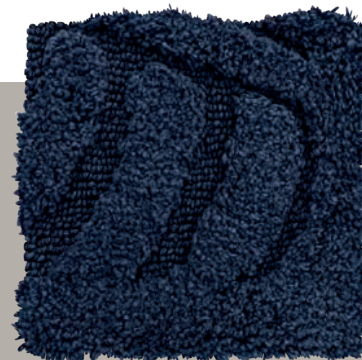
**60x100**  
3FTAU3681--

**60x120**  
3FTAU3682--

**70x140**  
3FTAU3683--



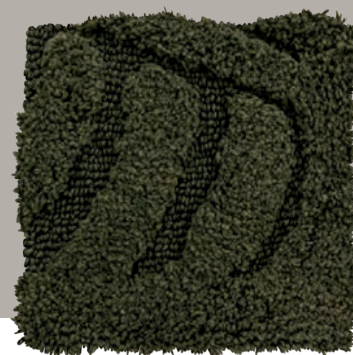
09 NATURALE



13 DARK DENIM



14 OLD GOLD



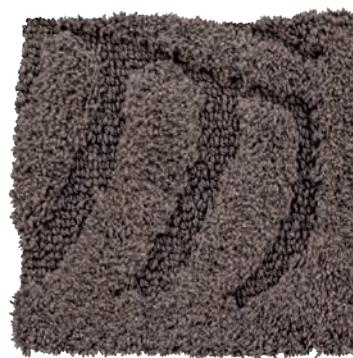
15 OLIVA



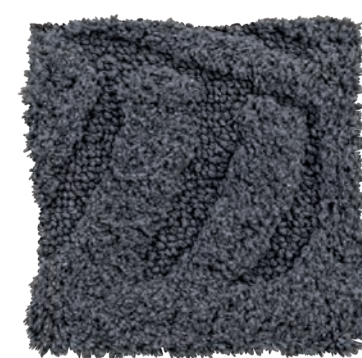
41 FOSSILE



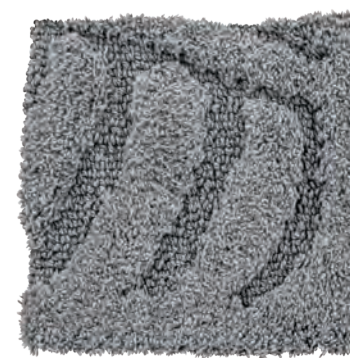
43 BIANCO



53 VISONE



62 PIOMBO



87 PERLA





# SAMOA





**60x90**  
3FTAU4410--

**60x120**  
3FTAU4411--

**60x150**  
3FTAU4412--



09 NATURALE



13 DARK DENIM



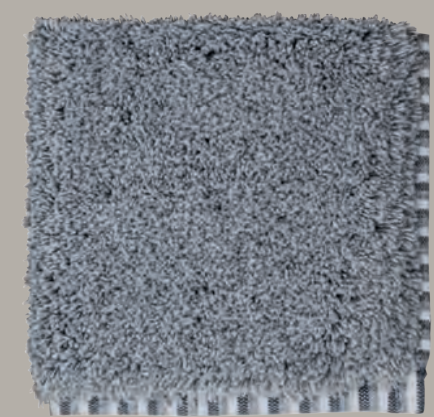
41 FOSSILE



43 BIANCO



53 VISONE



87 PERLA









# SIBYLLE

**55x90**  
3FTAU3241--

**55x120**  
3FTAU3242--

**Parure**  
**(55x90 + 2GW)**  
3FTAU3243--



09 NATURALE



13 DARK DENIM



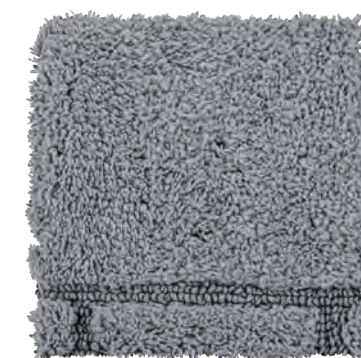
14 OLD GOLD



41 FOSSILE



53 VISONE



87 PERLA

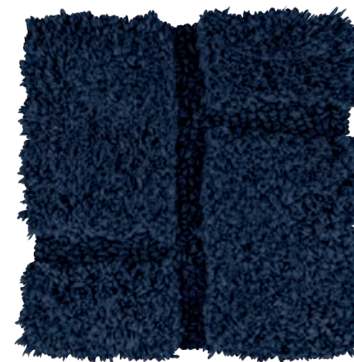




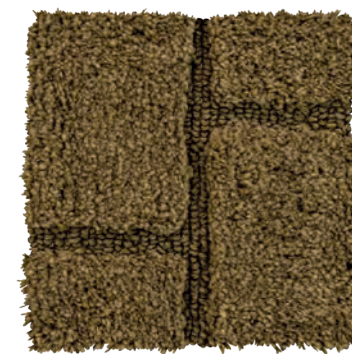
# WALL

**55x100**  
3FTA0230--

**55x140**  
3FTA0236--

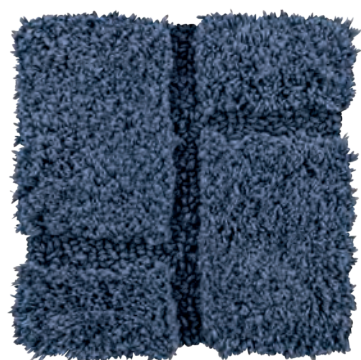


13 DARK DENIM



16 MOSS





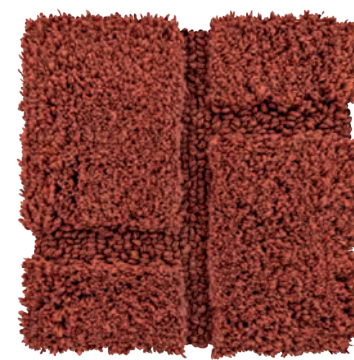
33 METALLO



35 NATURALE



41 FOSSILE



49 TERRACOTTA



# WOOLSOFT

Semplice, elegante e raffinato.  
È il nostro tappeto in misto lana.

*Simple, elegant and refined.  
This is our wool blend carpet.*









**60x120**  
3FTAD3611--

**70x140**  
3FTAD3612--

**80x160**  
3FTAD3613--

**Su misura/Customized**  
3FTAD3617--



04 ROSSO



09 NATURALE



62 PIOMBO



67 OCRA



70 SENAPE





12 CASTORO



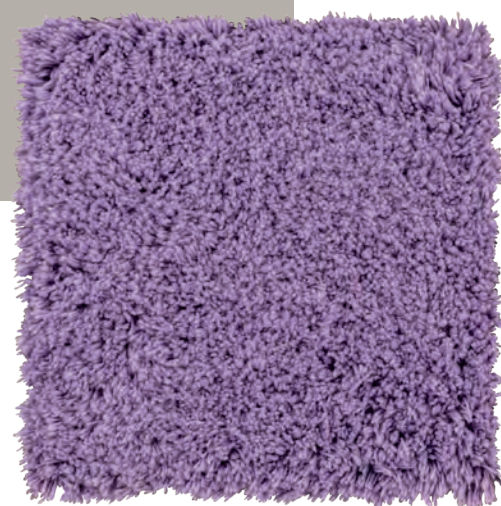
42 AVORIO



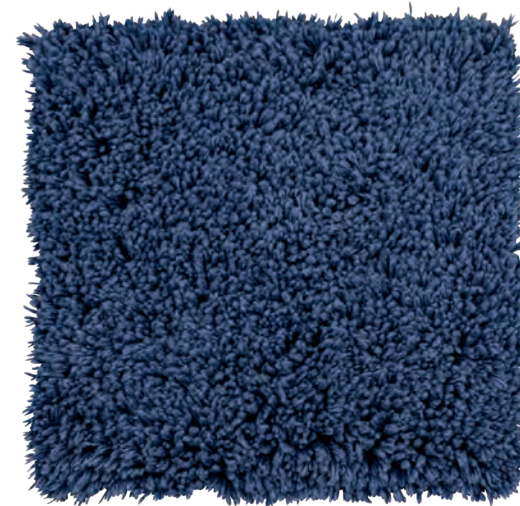
53 VISIONE



77 VERDE PRATO



78 GLICINE



85 AVIO















La nostra esperienza ventennale nel settore specifico delle lavanderie industriali ci ha permesso di acquisire un'importante esperienza e un'ottima conoscenza delle specifiche del prodotto. Grazie all'alta qualità, il prodotto può essere lavato ad elevate temperature e resiste senza problemi alle aggressioni dei prodotti chimici in uso sul mercato.

Forniamo una vasta gamma di forme, misure e disegni, andando incontro alle più specifiche esigenze del cliente. I nostri telai realizzano disegni Jacquard con tecnologia Tufting e con la tecnica del ricamo diretto, possiamo personalizzare i tappeti con il brand del cliente.

*Our twenty years know-how in the specific sector of industrial laundries has allowed us to acquire an important experience and an excellent knowledge of product features. Thanks to the high quality, our product can be washed at high temperatures and resists without problems the aggressions of the chemical products used on the market.*

*We provide a wide range of shapes, sizes and designs, meeting the most specific customer requests. Our frames make Jacquard designs with Tufting technology and, with the embroidery technique, we can customize the item with the customer's brand.*













SEDE LEGALE: Saniplast Industry S.r.l. - Via G. Falcone, 10 - 25035 OSPITALETTO (BS)

SEDE PRODUTTIVA: Via Al Cottonificio, 21 - 28923 VERBANIA (VB)

C.F. e P. IVA: IT 04118780982

Tel. +39 030 65 77 241 - Fax +39 030 65 74 05

[info@saniplast.it](mailto:info@saniplast.it)









---

Azienda di produzione italiana  
*Italian manufacture company*

[www.saniplast.it](http://www.saniplast.it)  
[www.saniplastshop.it](http://www.saniplastshop.it)